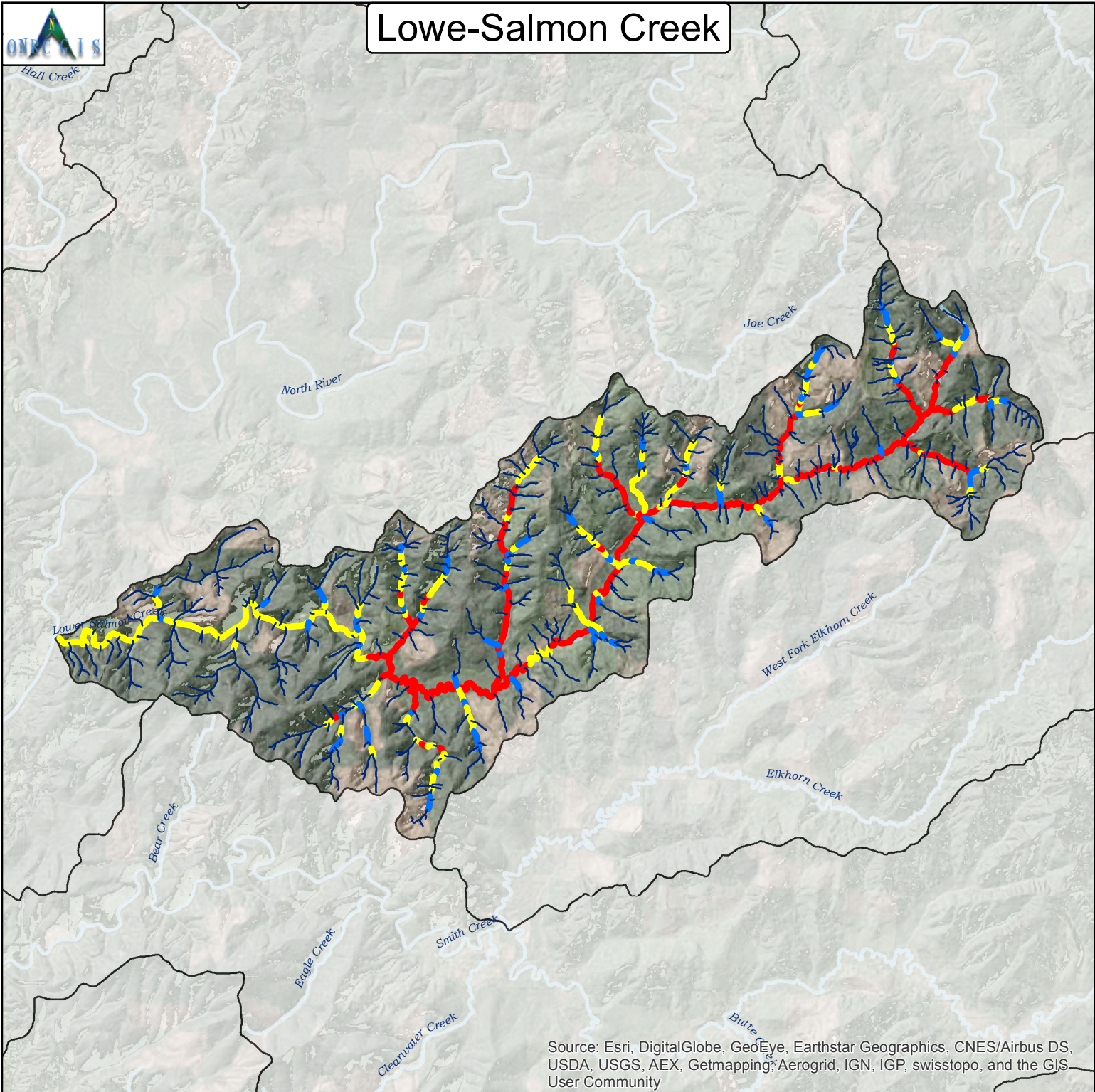




# Low-Salmon Creek



Source: Esri, DigitalGlobe, GeoEye, Earthstar Geographics, CNES/Airbus DS, USDA, USGS, AEX, Getmapping, Aerogrid, IGN, IGP, swisstopo, and the GIS User Community

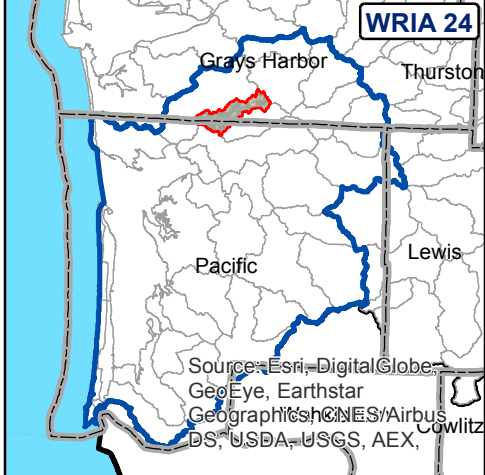
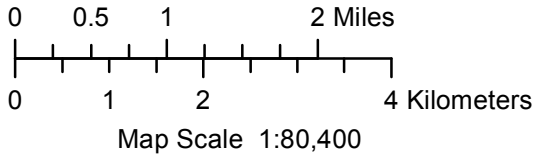
Maps By Keven Bennett  
UW | ONRC GIS  
11/18/2015

**Intrinsic Potential Scoring for Coho Habitat**

	0	
	> 0 to 0.35	Low
	> 0.35 to 0.75	Medium
	> 0.75 to 1.00	High

**Burnett, 2007**

Projection: UTM NAD83 10N Meters  
For Detailed Documentation Go To:  
[http://www.onrc.washington.edu/MarinePrograms/IPOuterCoast/PostPhaseII\\_MapPortal.html](http://www.onrc.washington.edu/MarinePrograms/IPOuterCoast/PostPhaseII_MapPortal.html)



Source: Esri, DigitalGlobe, GeoEye, Earthstar Geographics, CNES/Airbus DS, USDA, USGS, AEX, Jowlitz